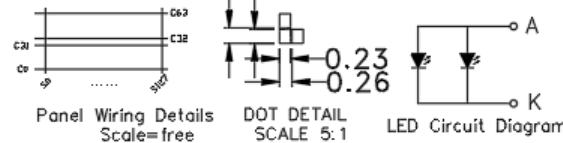
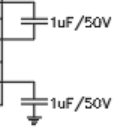


PIN	SYMBOL
1	/CS1
2	/RST
3	A0
4	SCLK
5	SDA
6	VDD
7	VSS
8	V0
9	XV0
10	VG



HOT DISPLAY

*1. LCD Display Type	FSTN,Transflective,Positive		
*2. Viewing Direction	6H	*6. Storage Temp	-30°C~80°C
*3. LCD Driver Mode	1/64Duty,1/9Bias	*7. Driver IC	ST7567
*4. Operating Voltage	3.3V	*8. Backlight	WHITE VF=3.0v IF=30mA
*5. Operating Temp	-20°C~70°C	*9. ROHS	

Dwg Title:		HTG12864C01A-SPI	
EDC No:		Ver: A/0	
Scale	Unit	Tol.	
1:1	mm	±0.3	
Drawn	Checked	Date: 2022-09-15	